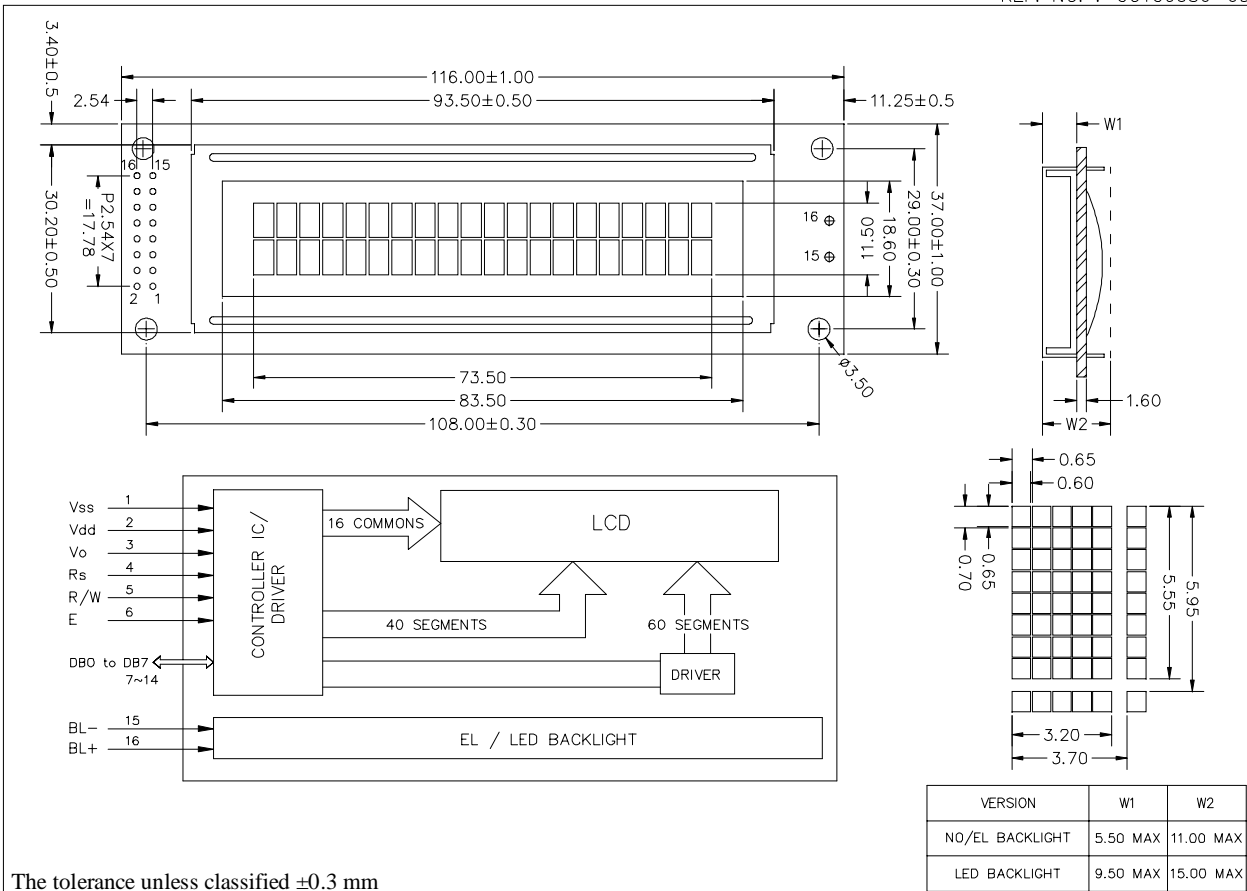


STANDARD CHARACTER MODULES

CMC220x01 OUTLINE DIMENSION AND BLOCK DIAGRAM

REF. NO. : CCTC0080-03



The tolerance unless classified ± 0.3 mm

PIN ASSIGNMENT

Pin No.	Symbol	Function
1	Vss	Ground Terminal
2	Vdd	Supply Terminal
3	Vo	Power Supply for LCD driver
4	RS	Register Select Signal
5	R/W	Read/Write Selection
6	E	Enable Signal
7	DB0	Data Bus Line
8	DB1	Data Bus Line
9	DB2	Data Bus Line
10	DB3	Data Bus Line
11	DB4	Data Bus Line
12	DB5	Data Bus Line
13	DB6	Data Bus Line
14	DB7	Data Bus Line
15	BL-	Led Backlight Ground
16	BL+	Led Backlight Power Supply

ABSOLUTE MAXIMUM RATING

Item	Symbol	Conditions	Min.	Max.	Unit
Power Supply Voltage	Vdd-Vss	-	-0.3	7.0	V
Input Voltage	Vin	-	Vss	Vdd	V
Operation Temperature	Topr	Nor	0	50	°C
Storage Temperature	Tstg	Nor	-20	70	°C

ELECTRICAL CHARACTERISTIC (Vdd = +5v, Ta = 25°C)

Item	Symbol	Conditions	Min.	Typ.	Max.	Unit
Logic Supply Voltage	Vdd	-	2.75	-	5.5	V
"H" Input Voltage	V _{ih}	-	0.7Vdd	-	Vdd	V
"L" Input Voltage	V _{il}	-	-0.3	-	0.6	V
"H" Output Voltage	V _{oh}	-	0.75Vdd	-	-	V
"L" Output Voltage	V _{ol}	-	-	-	0.2Vdd	V
Module Supply Current	I _{dd}	-	-	1.0	2.0	mA
LCD Driving Voltage	V _{LCD}	Vdd-Vo	-	4.5	-	V