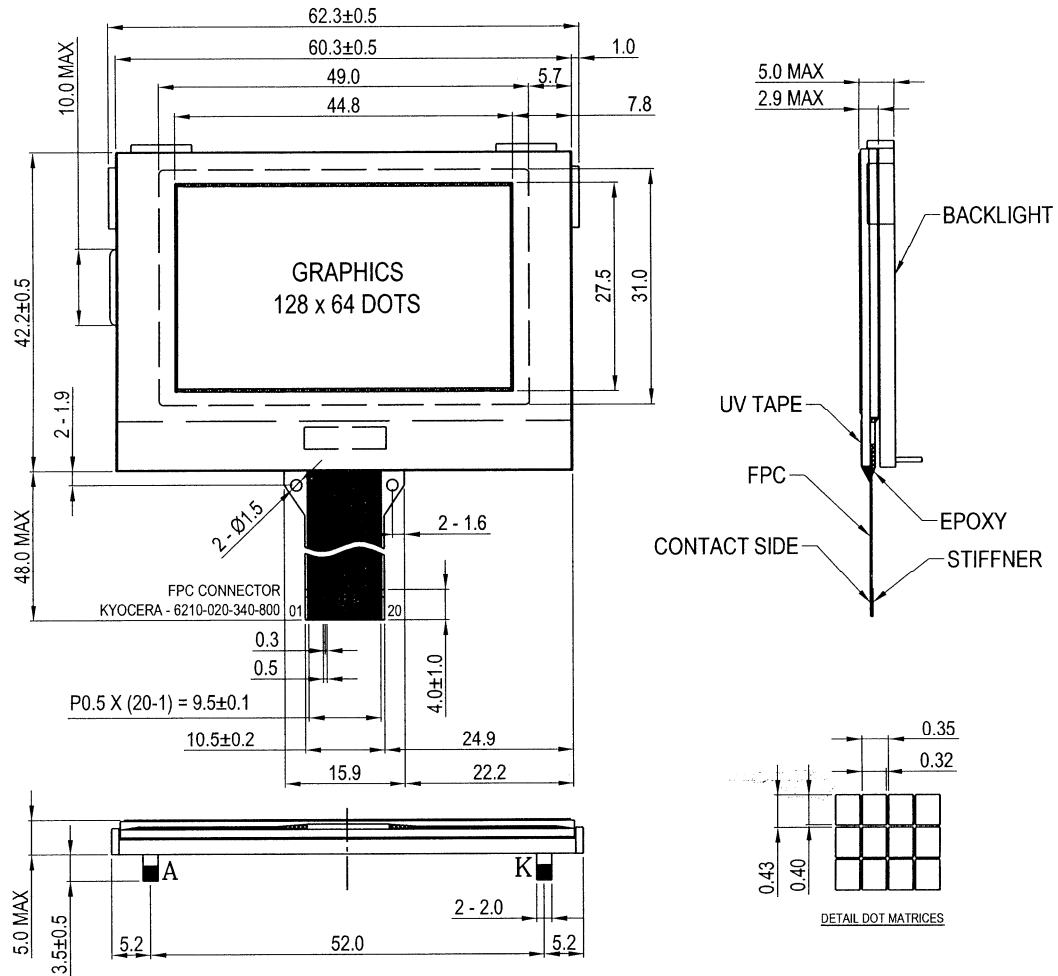


# G64128X06 . . . . .OUTLINE DIMENSION AND ELECTRICAL SPECIFICATION



- NOTES:**
- 1.VDD = 3.0V (TYP); 3.6V (MAX)
  - 2.VLCD = 10.5V ±5% (TYP)
  - 3.IDD = 0.50mA (TYP); 0.80mA (MAX)
  - 4.DUTY CYCLE = 1/65
  - 5.BIAS = 1/9
  - 6.CONTROLLER = S6B1713A01-BOCZ
  - 7.CONNECTOR = FPC
  - 8.UNMARKED TOLERANCES = ±0.30mm

## PIN ASSIGNMENT

PIN	1	2	3	4	5	6	7	8	9	10
SYMBOL	NC	CSB	RES	RS	SCL	SID	V <sub>SS</sub>	V <sub>DD</sub>	V <sub>OUT</sub>	C3+

PIN	11	12	13	14	15	16	17	18	19	20
SYMBOL	C3-	C1+	C1-	C2+	C2-	V0	V1	V2	V3	V4

## BACKLIGHT OPTION

LED COLOR	OPTION	VOLTAGE(V)	FORWARD CURRENT(mA)		
			MIN	TYP	MAX
YELLOW GREEN	YES	4.1	-	40	80
WHITE	YES	4.0	-	80	120
BLUE	YES	4.0	-	80	100